

hIFN-beta Antibody

Clone 4-2R1, mAb

hIFN-beta Abs

: 100

: -20°C

: 24F0421F1

:

:

,

, 4-2R1.

: 100 (PBS).

: 1000 ./., 3 50
15-20
100 , (

50%).

:

- 12
-20 -70°C.
- 1
2 8°C.
- 6
-20 -70°C

ProteinG

:

(hIFN-beta).

:

- (
- a (*in vitro*);
- (1 /).
- .

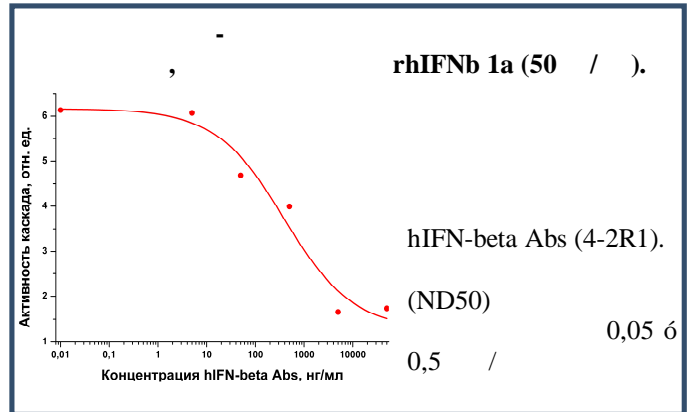
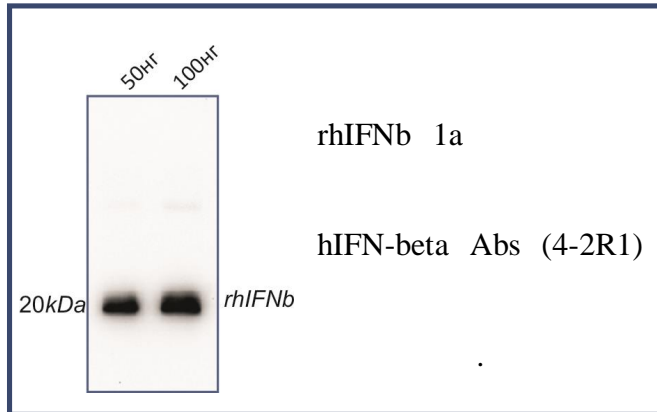
hIFN-beta Abs clon 4-2R1

,

ISRE
IFN-beta

(ND50) hIFN-beta Abs (4-2R1)

50 / rhIFN-beta 1a 0,05 ó 0,5 / .



(, . IFN, *Interferon*).

(IFNs)

II / type II IFN (), III / type III IFN (1 (IL-29), 2 (IL-28A), 3 (IL-28B)).

IFN I II

IFN III

IFN I

(IFN-),

(IFN-),

(IFN-). IFN-

. IFN II

, h1-

, NK-

. IFN III 6

(pathogen-associated molecular patterns (PAMPs))

(PRRs),

Tol-like receptors

(TLRs) retinoic acid-inducible gene 1 (RIG-1) like receptor group (RLRs). TLRs

PAMPs,

MyD88-

TRIF-

- NF-κB IRF3,

: TNF- , IL-6, IFN- IFN- . IFN-

IRF1

IFN- .

IFN I

IFN- IFN- NK-
IFN- NK-
MHC I II
IFN-
Th1-
IFN I (IFN- IFN-)
- IFNAR1 IFNAR2. IFN-
IFNGR, - IFNGR1 IFNGR2. IFN III
IFNLR1 IFN-10R2 (IL-10).
IFN I III JAK1 TYK2,
STAT1 STAT2 . STAT1 STAT2
ISGF3p48 ,
(*ISGs*), ISRE-
(interferon stimulated response element).
IFN II (IFN-), IFNGR, JAK1 JAK2
STAT1. STAT1
- gamma activation factor (GAF),
gamma activation site (GAS).
JAK/STAT ,
,
ISGs, , IFN-
. 38 - ()
JAK/STAT , IFN-
. AKT/mTOR -
ISG- , Mnk /eIF4E
IFN- ,
ISGs IFN- -
I ,
II ,
(osteopetrosis).
IFN .

III

IFN,

:

George P.M., Badiger R. // Pharmacology & Therapeutics (2012).135: 44.

González-Navajas J.M., Lee J. // Nat Rev Immunol.(2013).12(2): 125

Samual C.E. // Clinical Microbiology Reviews (2001).14(4): 778.

Pérez R., Pravia R. // Journal of Viral Hepatitis (1995). 2: 103.

Platanias LC // Blood. (2003). 101(12): 4667.