

, 121,

.#: PSG140-02

: 2

.#: PSG140-10

: 10

: -20°C

:

CHO

CHO,

rhVEGF-A121.

:

PBS,

0,05% Tween20, pH 7.0,
0,22 .

:

(PBS)

1-2 /
1000g20-30
1 ,

(BSA FBS)

:

- 12
-20 -70°C.
- 1
2 8°C.
- 6
-20 -70°C

:

: 15-19

: >98%,
Brilliant Blu.

Coomassie

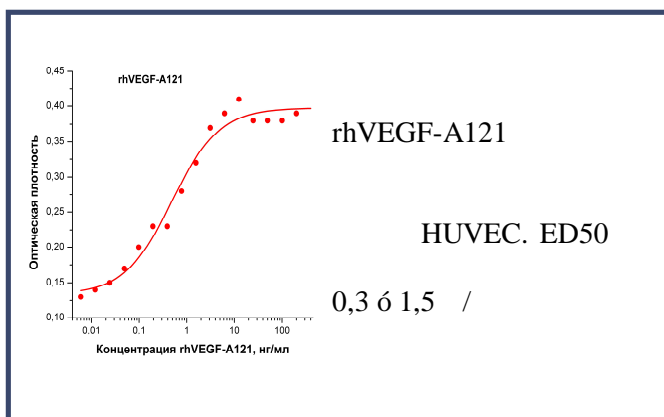
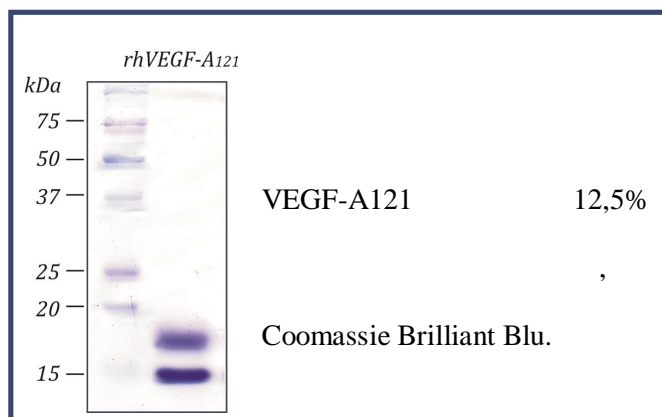
rhVEGF-A₁₂₁

:

ED50

0,3 -1,5 / .

(HUVEC).



(), (. VEGF, *Vascular endothelial growth factor*)

VEGF, VEGF-A.
(PIGF) VEGF-B, VEGF-C, VEGF-D. VEGF-A
, 45 ,

4 VEGF-A, 121, 165, 189 206-

VEGF
. VEGF
in vivo. , VEGF

VEGF

. *In vitro* VEGF

. VEGF

BCL2.

VEGF

VEGF,

VEGFs-

VEGFR,

VEGFR-2 (Flk-1/KDR). VEGF-A,

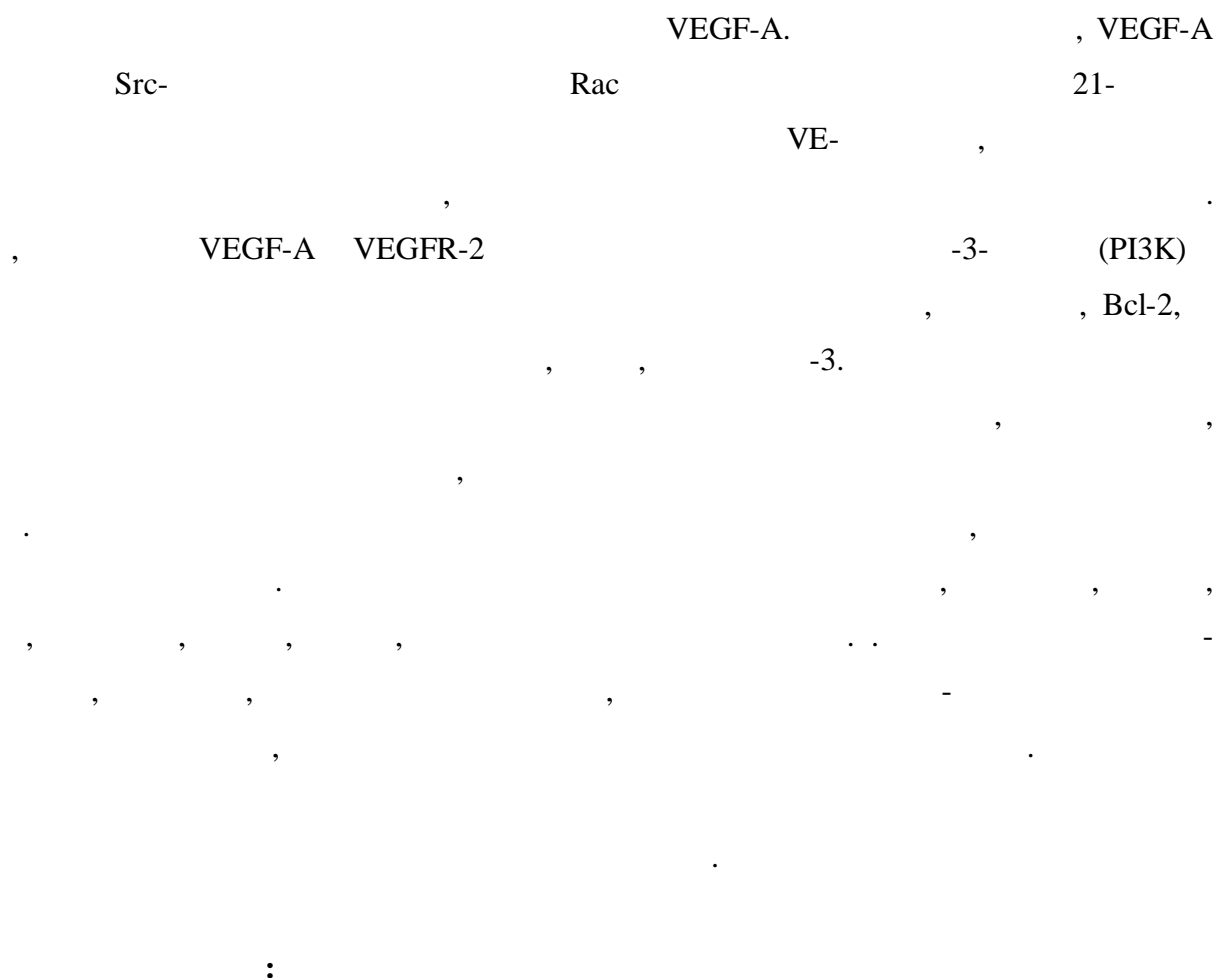
VEGFR-2,

MAPK-

VEGFR-2

T-

Src,



Adams RH, Alitalo K. // Nat. Rev. Mol. Cel. Biol.(2007). 8: 464.
Carmeliet P. // Nature Rev Genet (2003). 4: 710.
Carmeliet P., Jain R.K. // Nature (2011). 473 (7347): 298-307.
Chimenti I, et al.// Circ. Res. (2010). 106: 971.
Chung AS, Ferrara N. // Annu Rev Cell Dev Biol. (2011). 27: 563.
Dvorak H.F. // J.Clin.Oncol. (2002). 20: 4368
Gavard J, Gutkind JS. // Nat. Cell Biol. (2006). 8: 1223.
Matsumoto T, et al. // EMBO J. (2005). 24: 2342.
Taimeh Z, et al. // Nat Rev Cardiol. (2013). 10 (9): 519.